

Great Pacific Gold Provides an Additional Update on Field Work at Wild Dog

May 27, 2026 – Vancouver, BC, Canada – Great Pacific Gold Corp. (“Great Pacific Gold”, “GPAC”, or the “Company”) (TSXV: GPAC | OTCQX: GPGCF | Germany: OB3) is providing additional technical detail on encouraging results from ongoing geological mapping, trenching, surface sampling and MobileMT-supported targeting completed across the Elamaraka and Kargalio vein systems (the “EK Target Area”) at its flagship Wild Dog Project (“Wild Dog” or the “Project”), located on the island of New Britain, Papua New Guinea (“PNG”).

The Company has three working groups at Wild Dog: 1) a diamond drilling and geology team with two rigs focused on expanding resources in the Main Zone of the >15km long epithermal vein corridor; 2) a drill pad and road construction crew building drill pads ahead of drilling, and 3) a field exploration geology team – advancing targets in preparation for future drilling campaigns. An update on drilling was recently provided on May 20, 2026, and this release elaborates on field work in the EK Target Area.

Highlights – Elamaraka

- Geological mapping has identified **multiple subparallel quartz-sulphide vein systems** developed within a broader structurally controlled hydrothermal corridor extending beyond the historically mapped Elamaraka vein.
- Surface bench sampling returned **2.21 g/t Au, 10.2 g/t Ag and 0.05% Cu** across a 6m exposed **sulphide-bearing quartz vein**.
- Additional results from adjacent veins and parallel structures **significantly expand the known footprint of hydrothermal alteration and mineralized vein system**.
- Mapping identified **multiple structurally controlled quartz-sulphide vein arrays** associated with fault-shear corridors and broad hydrothermal alteration zones considered consistent with the broader Wild Dog epithermal system.

Highlights – Kargalio

- Geological mapping has defined a steeply dipping **~16 m wide N-S trending fault-shear corridor** hosting quartz-pyrite vein material, hydrothermal brecciation, sulphide mineralization and strong silica-sericite alteration.
- Kargalio is spatially coincident with a vertically extensive **780 m long MobileMT resistivity anomaly** interpreted to represent a large structurally controlled zone of silicification and quartz vein development.
- Reconnaissance mapping, sampling and interpreted MobileMT structural architecture indicate that hydrothermal alteration and mineralization **extend beyond the historically identified high-grade trench exposure**.

“Recent exploration work continues to expand the interpreted footprint of epithermal Au-Cu mineralization south of the existing Sinivit–Kavasuki area and further supports the Company’s evolving interpretation of Wild Dog as a large-scale magmatic-hydrothermal system containing multiple structurally controlled mineralized centres distributed across a broader district-scale corridor” stated Callum Spink, VP Exploration.

“Importantly, the southern portion of the main Wild Dog corridor is rapidly emerging as a growing pipeline of high-priority exploration targets where geological mapping, geochemistry, structural interpretation and MobileMT geophysics are increasingly converging on coherent mineralized trends extending beyond the currently drilled portions of the district.”

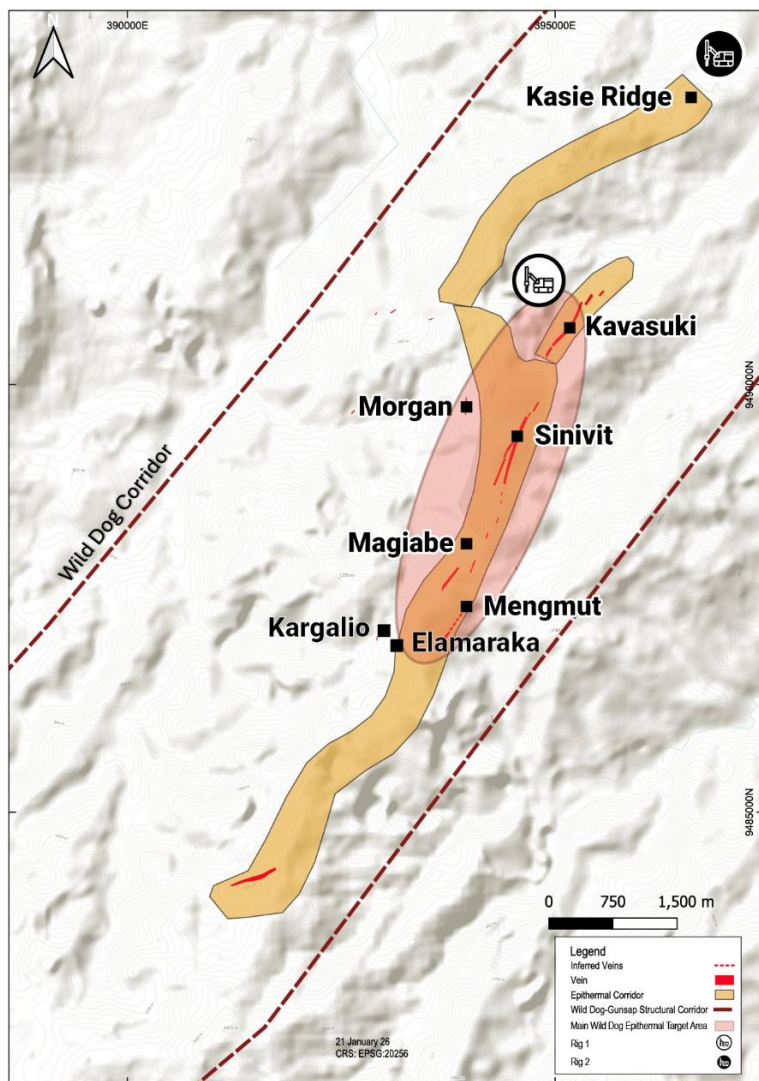


Figure 1: Simplified plan view of the Wild Dog Structural Corridor highlighting key Main Zone epithermal target areas, current drilling locations, interpreted structural trends and priority exploration targets.

Elamaraka Vein System - Mapping and Sampling

The Elamaraka prospect is located approximately 2 km southwest of the Sinivit Deposit and is interpreted to form part of the Sinivit–Kavasuki epithermal corridor within the broader Wild Dog structural system.

Historical trenching completed by previous operators returned results of up to **6 m @ 4.04 g/t Au¹** and established Elamaraka as a priority follow-up target within the southern corridor. Recent exploration work completed by GPAC has significantly improved the geological understanding of the Elamaraka system and materially expanded the interpreted footprint of hydrothermal alteration and sulphide-bearing quartz vein development beyond the historically mapped vein exposure.

Geological mapping (Figure 2) identified multiple structurally controlled quartz-sulphide vein arrays developed within fault-shear corridors and associated with widespread silica-sericite-pyrite alteration. Mineralization is characterised by sheeted quartz-pyrite ± chalcopyrite veins, fracture-controlled sulphide development and localised crackle-style quartz-silica brecciation consistent with the broader Wild Dog epithermal environment.

Surface bench sampling returned 2.21 g/t Au, 10.2 g/t Ag and 0.04% Cu (Figure 3) across a 6 m exposed sulphide-bearing quartz vein zone. Additional anomalous Au-Cu values were returned from adjacent vein splays and parallel structures, further supporting the interpretation of a laterally extensive mineralized hydrothermal system within the southern corridor.

The recognition of multiple mineralized structures, broad hydrothermal alteration zones and associated geochemical anomalism suggests the Elamaraka system is considerably more extensive and structurally complex than previously recognised.

Ongoing exploration work will focus on additional trenching, detailed structural mapping and surface sampling designed to refine the continuity, orientation and controls on mineralization and prioritise future drill targets across the broader Elamaraka target area.

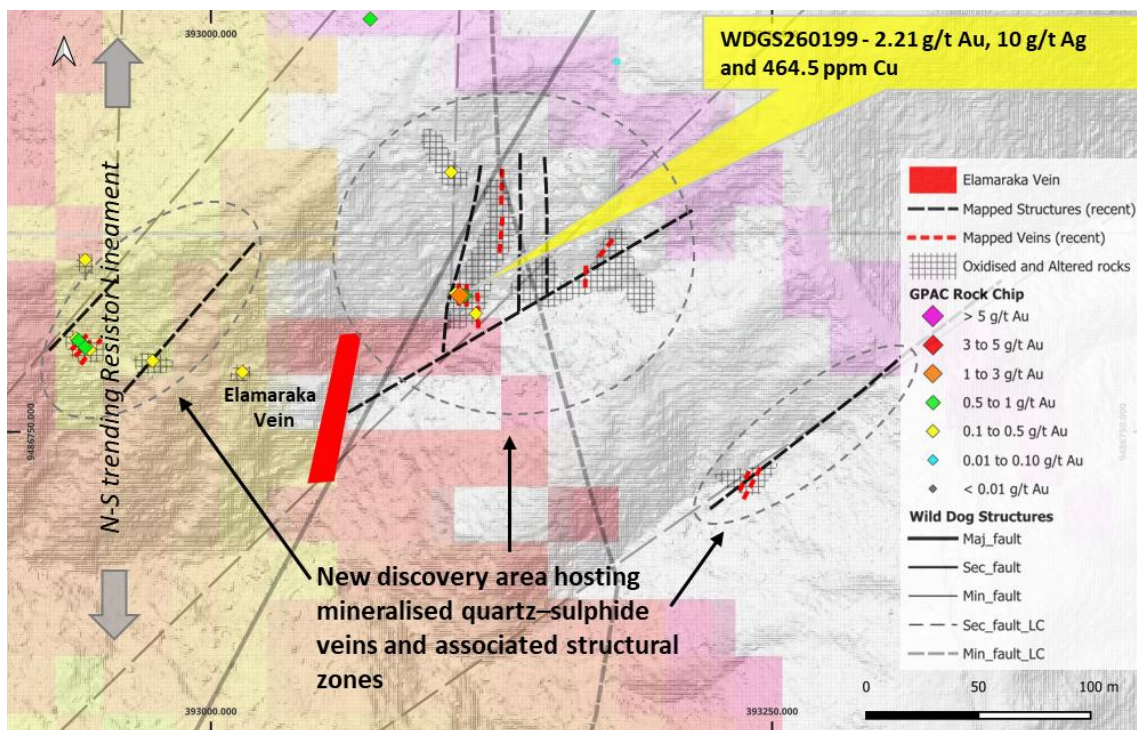


Figure 2: Plan map of the Elamaraka Vein system showing geological mapping, interpreted structures, quartz-sulphide vein trends and surface geochemical sampling results.



Figure 3: Surface sample WDGS260199 from the Elamaraka Vein system showing grey quartz–silica–pyrite vein material with sericite–illite–pyrite alteration, fracture-controlled oxidation and disseminated fine-grained pyrite ± arsenopyrite sulphide mineralization (2.21 g/t Au, 10.2 g/t Ag and 465 ppm Cu).

Kargalio Vein System – Mapping and Sampling

Kargalio represents one of the highest-grade historical vein targets identified within the southern Wild Dog corridor, with historical trenching completed by previous operators returning up to **6 m @ 11.9 g/t Au¹**.

Recent geological mapping (Figure 4) undertaken by GPAC has identified a steeply dipping N-S trending fault-shear corridor approximately 16 m wide hosting quartz-pyrite vein material, pervasive silica, hydrothermal brecciation and sulphide mineralization associated with strong silica-sericite alteration (Figure 5). Additional subordinate quartz-sulphide vein splays were also identified adjacent to the main structural corridor.

Importantly, Kargalio is spatially associated with a strong N-S trending MobileMT resistivity anomaly extending approximately 780 m along strike and to an interpreted depth of approximately 450 m below surface. The vertically continuous resistive feature is considered consistent with extensive silicification and structurally focused quartz vein development within the southern Wild Dog hydrothermal corridor.

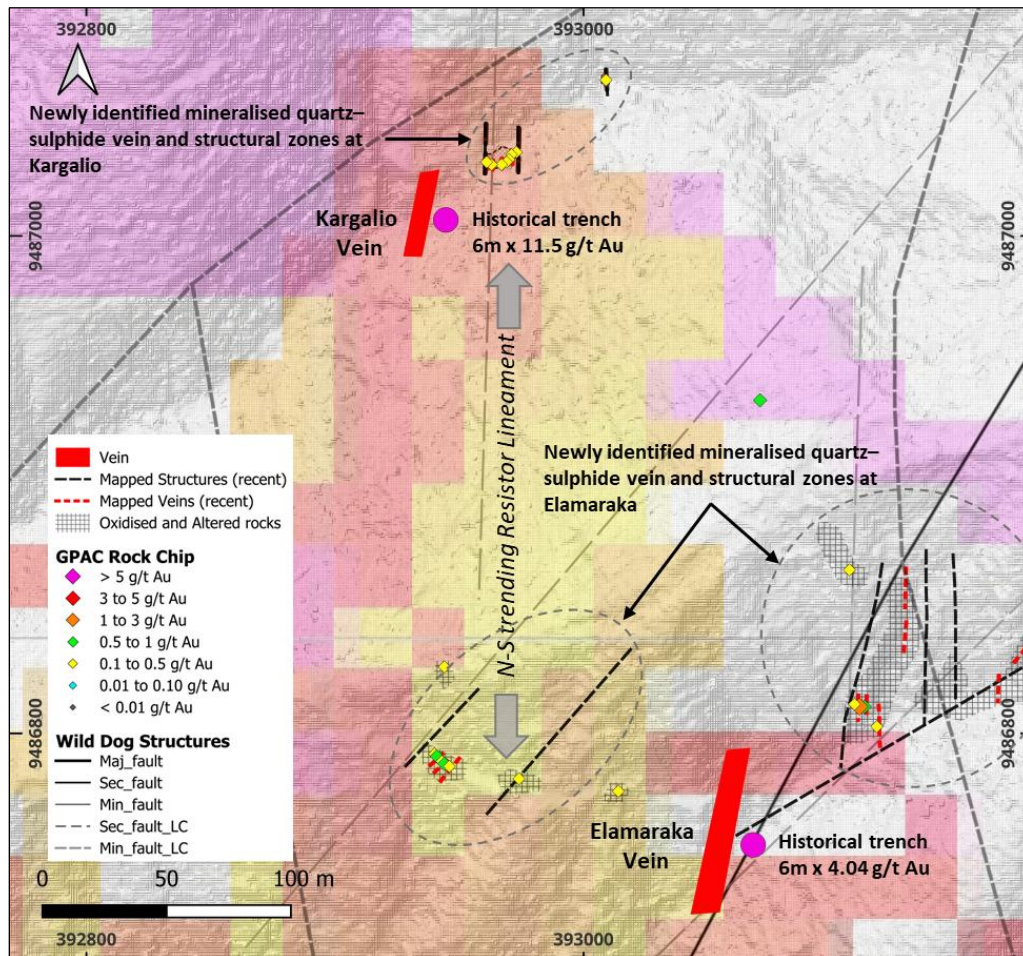


Figure 4: Plan view of the Kargalio and Elamaraka target areas showing surface geochemical sampling, interpreted structures, quartz-sulphide vein trends and MobileMT geophysical context.



Figure 5: Rock-chip sample WDGs260242 collected northeast of the main Kargalio Vein showing quartz-silica-pyrite vein material associated with silica-sericite-pyrite alteration, late-stage silica overprinting and disseminated fine-grained sulphide mineralization.

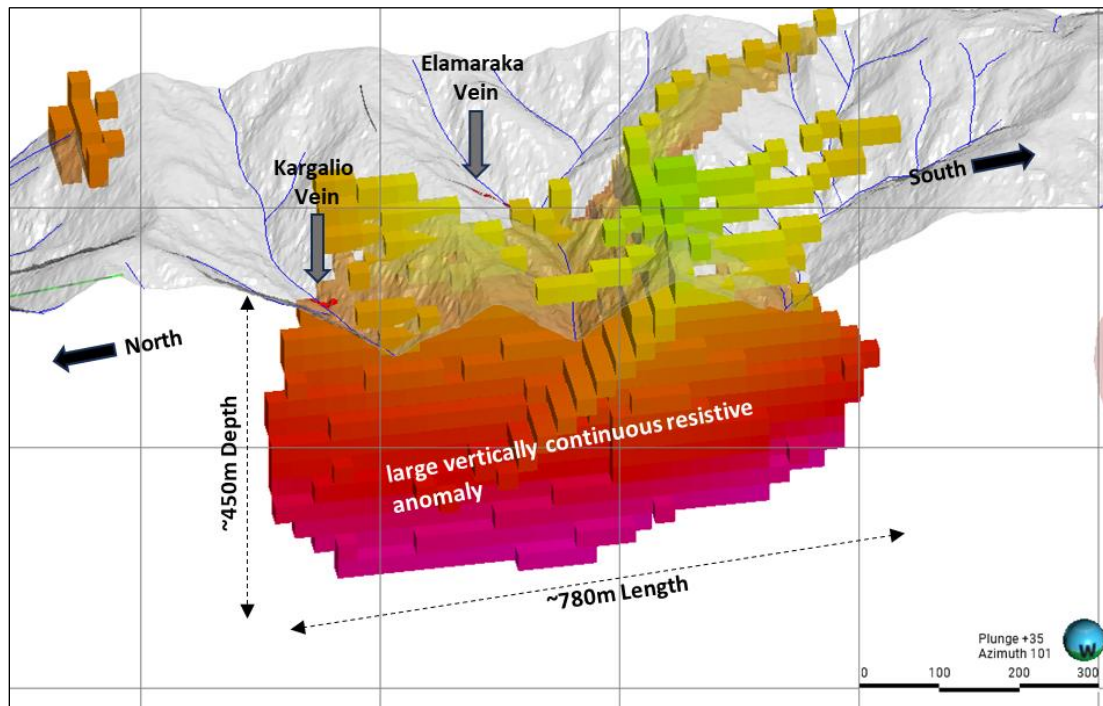


Figure 6: Oblique MobileMT resistivity view highlighting a vertically continuous N-S trending resistive anomaly extending to approximately 450 m depth beneath the Kargalio and Elamaraka vein systems. The resistive feature is spatially associated with mapped quartz-sulphide vein outcrops and interpreted structural corridors.

Elevated copper values associated with chalcopyrite-bearing quartz-sulphide veins support the interpretation of a polymetallic Au-Cu hydrothermal system with geological characteristics consistent with the broader Wild Dog epithermal environment. Surface oxidation developed within portions of the vein system is considered encouraging in the context of exploration targeting and may indicate transition into fresh sulphide mineralization at relatively shallow depth.

Additional geological mapping, trenching and surface sampling programs are planned to further refine the geometry, continuity and scale potential of the Kargalio system and prioritise drill targets associated with the interpreted MobileMT structural corridor.

Expanding Exploration Success Along the Southern Wild Dog Structural Corridor

Elamaraka and Kargalio represent two emerging exploration targets located within the southern extension of the Wild Dog–Sinivit structural corridor approximately 2 km southwest of the existing Sinivit–Kavasuki mineralized system.

Recent exploration programs completed by GPAC continue to demonstrate that mineralization at Wild Dog is not confined to the existing Sinivit–Kavasuki mineralized system, but instead appears to be distributed across a much broader structurally linked hydrothermal corridor extending for several kilometres along strike.

The continued identification of sulphide-bearing quartz vein systems, hydrothermal alteration zones, elevated Au-Cu geochemistry and coincident MobileMT structural features across multiple southern

targets is materially improving the Company's understanding of the broader Wild Dog mineral system and strengthening the evolving district-scale exploration model.

GPAC's exploration strategy remains focused on resource drilling on the main Wild Dog epithermal targets in 2026, while systematically advancing a growing pipeline of targets through integrated geological mapping, trenching, geochemistry, MobileMT-supported structural interpretation and drill planning.

Table 1: Summary of selected surface rock-chip, channel and surface bench sample results from the Elamaraka and Kargalio vein systems within the southern Wild Dog structural corridor.

Sample ID	Sample Type	Target	Easting	Northing	Au (g/t)	Ag (g/t)	Cu (ppm)
WDGS260197	Rock Chip (channel)	Elamaraka	393221	9486973	0.47	3.30	149
WDGS260199	Rock Chip (channel)	Elamaraka	393219	9486973	2.21	10.2	465
WDGS260234	Rock Chip (channel)	Elamaraka	393049	9486953	0.53	1.27	62
WDGS260236	Rock Chip (channel)	Elamaraka	393052	9486950	0.61	1.15	53
WDGS260237	Rock Chip (channel)	Elamaraka	393054	9486949	0.26	2.28	72
WDGS260242	Rock Chip (grab)	Kargalio	393117	9487225	0.13	1.12	193

Surface rock-chip, grab and surface bench samples are selective in nature and may not represent true underlying mineralization.

Notes

1. Historical results have not been independently verified by the Company and should not be relied upon as an indication of current or future mineral resources, mineral reserves or mineralization at the Wild Dog Project.

On behalf of Great Pacific Gold:

Greg McCunn

Chief Executive Officer and Director

For further information, visit gpacgold.com or contact:

Investor Relations

Phone +1-778-262-2331

Email: info@gpacgold.com

Qualified Person

The technical content of this news release has been reviewed, verified and approved by Callum Spink, Vice President Exploration of Great Pacific Gold Corp., who is a Member of the Australian Institute of Geoscientists (MAIG) and a Qualified Person as defined by National Instrument 43-101 Standards of Disclosure for Mineral Projects. Mr. Spink has reviewed and verified the geological interpretation, exploration data, sampling procedures, analytical results and geophysical interpretation referenced in this news release and takes responsibility for the technical content contained herein. Mr. Spink is not independent of the Company.

Quality Assurance / Quality Control (QAQC)

The Company follows industry-standard Quality Assurance and Quality Control (QA/QC) procedures for the collection, handling and analysis of exploration samples. Rock-chip and surface bench samples referenced in this release were collected by Great Pacific Gold geological staff and submitted to Intertek

Minerals Ltd. in Lae, Papua New Guinea, an ISO 9001-certified independent analytical laboratory with internationally recognised quality standards.

Samples were dried, crushed and pulverised prior to analysis. Gold analyses were completed by fire assay, while silver and copper analyses were completed using multi-element methods following four-acid digestion (MS48) and ICP-OES/MS analysis.

Certified reference materials (standards), blanks and field duplicates were inserted into the sample stream at industry-standard frequencies, including routine insertion of blanks following mineralized intervals. All assay batches received to date have passed QA/QC review and fall within acceptable tolerance limits.

Sampling procedures and chain-of-custody protocols were managed by Company geologists and field staff in accordance with industry best practices. Rock-chip and surface bench samples are selective in nature and may not be representative of the underlying mineralized system.

About Great Pacific Gold

Great Pacific Gold's vision is to become the leading gold-copper development company in Papua New Guinea ("PNG"). The Company has a portfolio of exploration-stage projects in PNG, as follows:

- **Wild Dog Project:** the Company's flagship project is located in the East New Britain Province of PNG. The project consists of a large-scale epithermal target, the Wild Dog structural corridor, stretching 15 km in strike length and potentially over 1,000 metres deep based on a recent MobileMT geophysics survey. The survey also highlighted the Magiabe porphyry target, adjacent to the epithermal target and potentially 1,000 metres in diameter and over 2,000 metres deep. Drilling of the epithermal structure on the Sinivit target has yielded high-grade results, including WDG-08 which intercepted 8.4 metres at 50 g/t AuEq from 154 metres. The current drilling program will extend into 2026 with two drilling rigs mobilised on site.
- **Kesar Project:** located in the Eastern Highlands Province of PNG and contiguous with the mine tenements of K92 Mining Inc. ("K92"), the Kesar Project is a greenfield exploration project with several high-priority targets in close proximity to the property boundary with K92. Multiple epithermal veins at Kesar are on strike and have the same orientation as key K92 deposits, such as Kora. Exploration work to date by the Company at the Kesar Project has shown that these veins have high grades of gold present in outcrop and very elevated gold in soil grades, coincident with aeromagnetic highs. The Company conducted a diamond drill program on key target areas at the Kesar Project from November 2024 to May 2025 and have developed a follow-up Phase 2 program for 2026.
- **Arau Project:** also located in the Eastern Highlands Province of PNG, the Arau Project is south of and contiguous to the mine tenements of K92. Arau contains the highly prospective Mt. Victor exploration target with potential for a high sulphidation epithermal gold-base metal deposit. A Phase 1 Reverse Circulation drilling program was completed at Mt. Victor in August 2024, with encouraging results. The Arau Project includes the Elandora licence, which also contains various epithermal and copper-gold porphyry targets.

The Company also holds the Tinga Valley Project in PNG.

Forward-Looking Statements

Information set forth in this news release contains forward-looking statements that are based on assumptions as of the date of this news release. These statements reflect management's current estimates, beliefs, intentions and expectations. They are not guarantees of future performance. Great Pacific Gold cautions that all forward-looking statements are inherently uncertain and that actual

performance may be affected by many material factors, most of which are beyond their respective control. Such factors include, among other things: risks and uncertainties relating to Great Pacific Gold's limited operating history, its exploration and development activities on its mineral properties and the need to comply with environmental and governmental regulations. Accordingly, actual and future events, conditions and results may differ materially from the estimates, beliefs, intentions and expectations expressed or implied in the forward-looking information. Except as required under applicable securities legislation, Great Pacific Gold does not undertake to publicly update or revise forward-looking information.

Mineralization at the properties held by K92 Mining Inc. and at the Wafi-Golpu deposit is not necessarily indicative of mineralization at the Wild Dog Project.

Neither TSX Venture Exchange nor its Regulation Services Provider (as that term is defined in the policies of the TSX Venture Exchange) accepts responsibility for the adequacy or accuracy of this release.